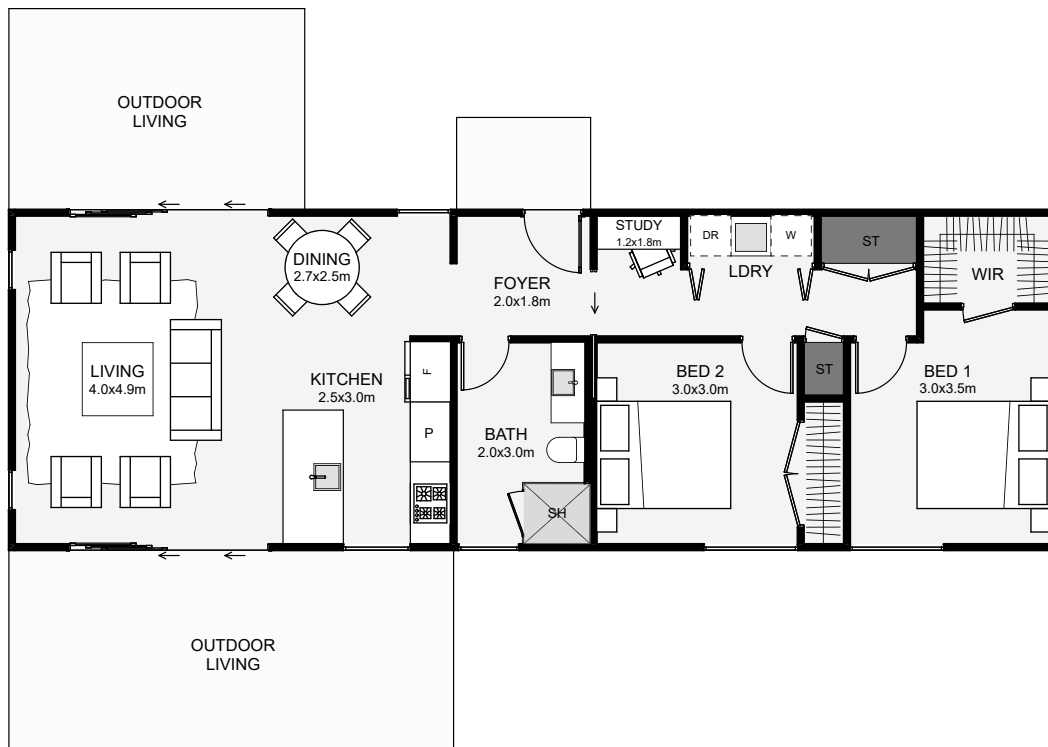




This contemporary home will maximise a broader northern outlook ideally. Inside, both bedrooms are away from the living. This dwelling also sports a study nook, proper storage and a walk-in wardrobe. The main living is designed around the sun-path, giving you the morning to evening sun.



Floor Area: 79m²



Contact us:

m: 027 408 7217

e: glenn@gwb.co.nz

www.gwb.co.nz

